

Downloading data from your Logtag

This is our recommended procedure for regularly downloading the data from your LogTag. For this procedure to work effectively, ensure that your LogTag is configured to overwrite old memories.

- Record readings continuously, overwrite oldest when memory full
- Record readings go that:

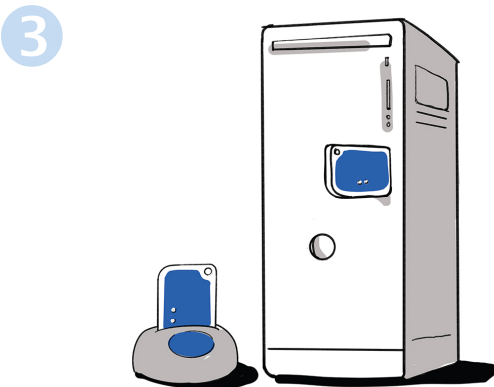


1 Open the LogTag Analyser software

It's important that you do this first



2 Get the LogTag from the fridge



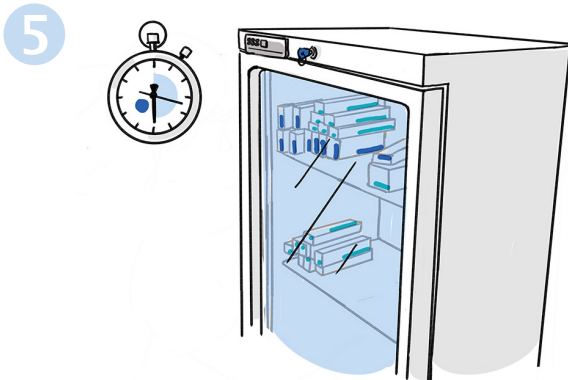
3 Insert the LogTag in the Reader or computer

The software will detect the LogTag and automatically download and save your report to your computer.



4 Wait for the chart to appear

When you see this graph, you know it is safe to remove the LogTag from the computer.



5 Return the LogTag to the fridge

Ideally, the LogTag should be out of the fridge for only 20-30 seconds.



6 Examine your Report

With the LogTag safely back logging, you can examine and print the report at your leisure.